

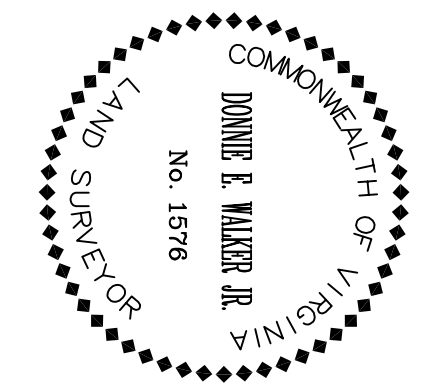
NEWTON INC.
PB 294-PG 264

THE STREET(S) PROVIDING ACCESS TO THE PROPERTY DESCRIBED (A) HAS NOT BEEN CONSTRUCTED TO STANDARDS REQUIRED BY THE VIRGINIA DEPARTMENT OF TRANSPORTATION, (B) WILL NOT BE MAINTAINED AS A PART OF THE STATE HIGHWAY SYSTEMS UNDER THAT DEPARTMENT'S JURISDICTION, AND (C) WILL NOT BE ELIGIBLE FOR ADDITION TO SUCH SYSTEMS FOR MAINTENANCE AND IMPROVEMENT UNDER ITS JURISDICTION UNTIL RECONSTRUCTED TO STANDARDS ACCEPTABLE TO SAID DEPARTMENT, UTILIZING FUNDS OTHER THAN THOSE ADMINISTERED BY THAT AGENCY.

THIS PLAT IS EXCEPTED FROM THE FULL TERMS OF THE PRESENT SUBDIVISION ORDINANCE IN THAT IT MEETS THE REQUIREMENTS SET FORTH IN SECTION 14.2(1).

I, DONNIE E. WALKER, JR., LAND SURVEYOR, CERTIFY THAT THIS MAP WAS DRAWN FROM AN ACTUAL FIELD SURVEY PERFORMED UNDER MY DIRECT SUPERVISION AND THAT THE ERROR OF CLOSURE EXCEEDS 1 PART IN 10,000.

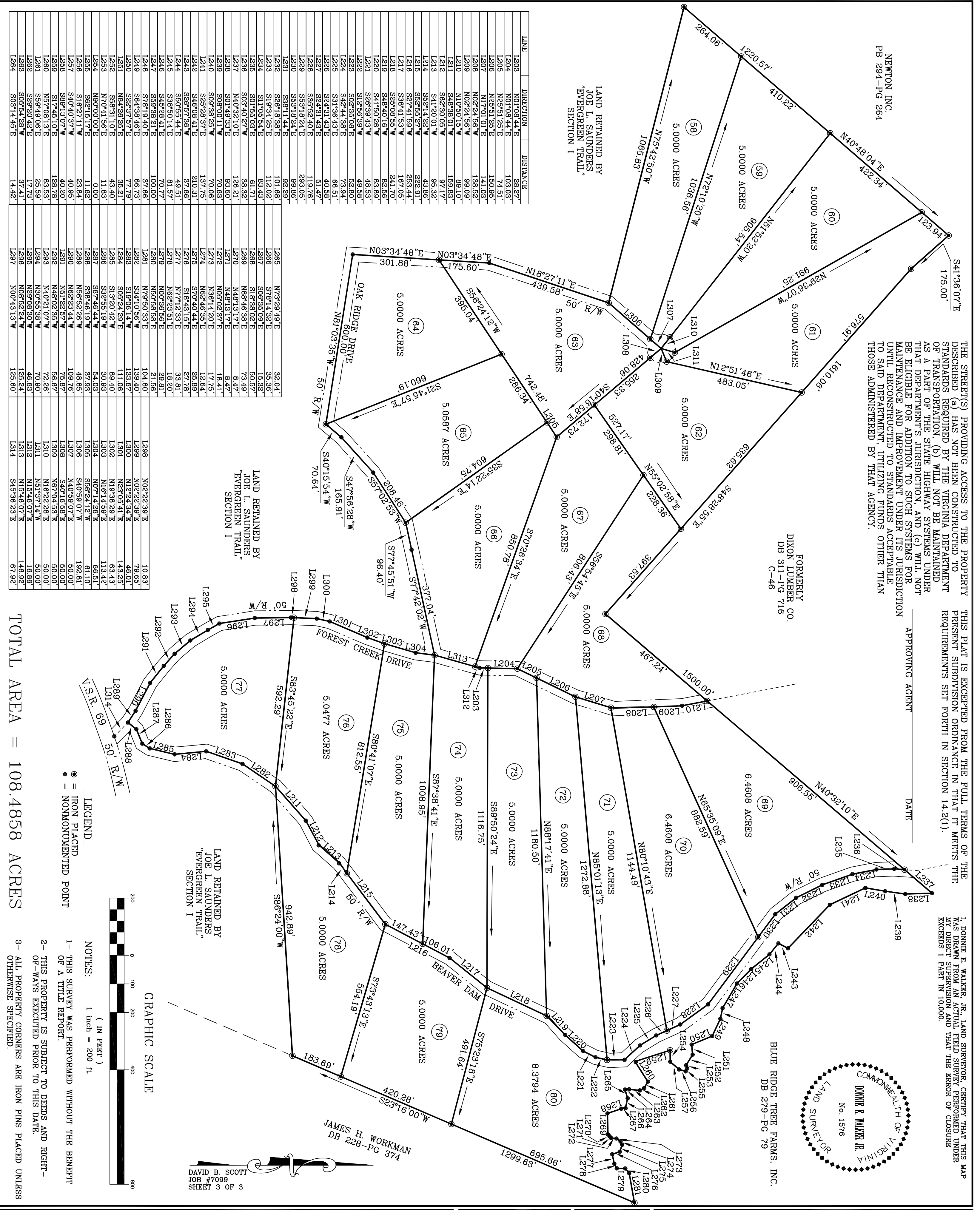
APPROVING AGENT DATE



BLUE RIDGE TREE FARMS, INC.
DB 279-PG 79

FORMERLY
DIXON LUMBER CO.
DB 311-PG 716
C-46

LAND RETAINED BY
JOE L. SAUNDERS
"EVERGREEN TRAIL"
SECTION I



LINE	DIRECTION	DISTANCE
L203	N01°08'44"E	28.27'
L204	N01°08'44"E	103.03'
L205	N25°51'25"E	74.51'
L206	N25°51'25"E	150.95'
L207	N17°01'01"E	141.03'
L208	N02°24'56"W	138.52'
L209	N02°24'56"W	99.10'
L210	N10°50'15"W	89.10'
L211	S45°38'01"W	159.83'
L212	S62°30'05"W	97.17'
L213	S41°20'01"W	95.32'
L214	S52°14'22"W	43.86'
L215	S52°35'27"W	222.91'
L216	S27°41'59"W	253.44'
L217	S39°41'53"W	167.05'
L218	S25°08'55"W	241.70'
L219	S48°40'16"W	82.56'
L220	S41°50'28"W	83.89'
L221	S28°39'43"W	48.53'
L222	S12°56'39"W	49.88'
L223	S02°35'08"E	52.80'
L224	S42°44'38"E	73.94'
L225	S31°36'43"E	66.51'
L226	S24°31'43"E	40.58'
L227	S24°31'43"E	51.47'
L228	S33°52'40"E	118.76'
L229	S53°18'24"E	293.05'
L230	S53°18'24"E	99.88'
L231	S38°11'44"E	92.29'
L232	S28°18'38"E	101.68'
L233	S11°34'25"E	112.02'
L234	S11°05'54"E	83.43'
L235	S01°55'03"E	61.71'
L236	S03°40'27"W	38.32'
L237	N40°32'10"E	128.21'
L238	S01°49'33"E	93.60'
L239	S08°00'11"W	70.63'
L240	S09°38'25"W	70.06'
L241	S25°28'37"E	137.73'
L242	S25°28'37"E	210.31'
L243	S26°37'36"W	37.66'
L244	S30°55'44"E	49.51'
L245	S38°50'14"E	18.20'
L246	S45°28'41"E	70.77'
L247	S59°38'21"E	100.00'
L248	S78°19'40"E	37.66'
L249	S64°38'48"E	66.73'
L250	S22°37'57"E	77.79'
L251	N84°26'25"E	35.21'
L252	N70°41'56"E	43.40'
L253	N70°41'56"E	11.83'
L254	N90°00'00"E	0.00'
L255	S62°15'17"E	11.62'
L256	S16°21'11"W	23.84'
L257	S40°40'37"W	40.95'
L258	S89°13'07"W	75.87'
L259	S17°48'10"E	128.78'
L260	S57°08'13"E	83.53'
L261	S59°49'06"E	25.59'
L262	S29°20'42"E	17.73'
L263	S05°54'28"W	37.41'
L264	S03°14'45"E	14.42'

LAND RETAINED BY
JOE L. SAUNDERS
"EVERGREEN TRAIL"
SECTION I

LAND RETAINED BY
JOE L. SAUNDERS
"EVERGREEN TRAIL"
SECTION I

LEGEND
● = IRON PLACED
○ = NONMONUMENTED POINT



NOTES:
1- THIS SURVEY WAS PERFORMED WITHOUT THE BENEFIT OF A TITLE REPORT.
2- THIS PROPERTY IS SUBJECT TO DEEDS AND RIGHT-OF-WAYS EXECUTED PRIOR TO THIS DATE.
3- ALL PROPERTY CORNERS ARE IRON PINS PLACED UNLESS OTHERWISE SPECIFIED.

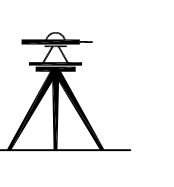
TOTAL AREA = 108.4858 ACRES

SUBDIVISION OF
EVERGREEN TRAIL SECTION II
LEAD MINES MAGISTERIAL DISTRICT WYTHE COUNTY, VIRGINIA

Survey: LDC
Drawn: JAS
Checked: DEW
Scale: 1"=200'

Job. No. S991020
Date 11/04/99

DALTON-WALKER ASSOC. P.C.
Surveyors
119 N. MAIN ST. GALAX, VIRGINIA 24333
(540) 236-0632 FAX (540) 236-0596



DAVID B. SCOTT
JOB #7095
SHEET 3 OF 3