

Setting Up Microsoft Outlook or Outlook Express with your Equity One Mortgage Email Account

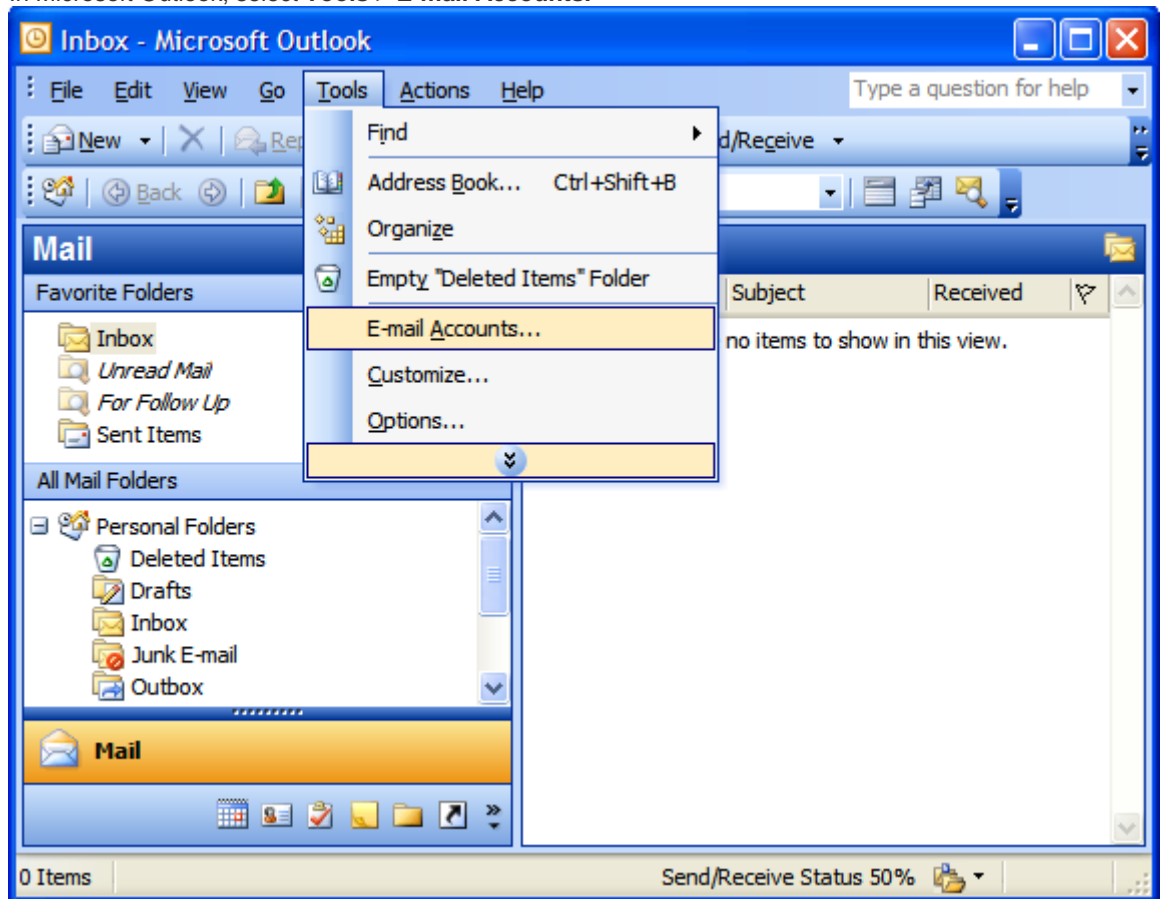
The following instructions should guide you through setup, but if you would have any additional questions, you can reach the support desk at **(480) 624-2500**.

Setting Up Your E-mail in Microsoft Outlook

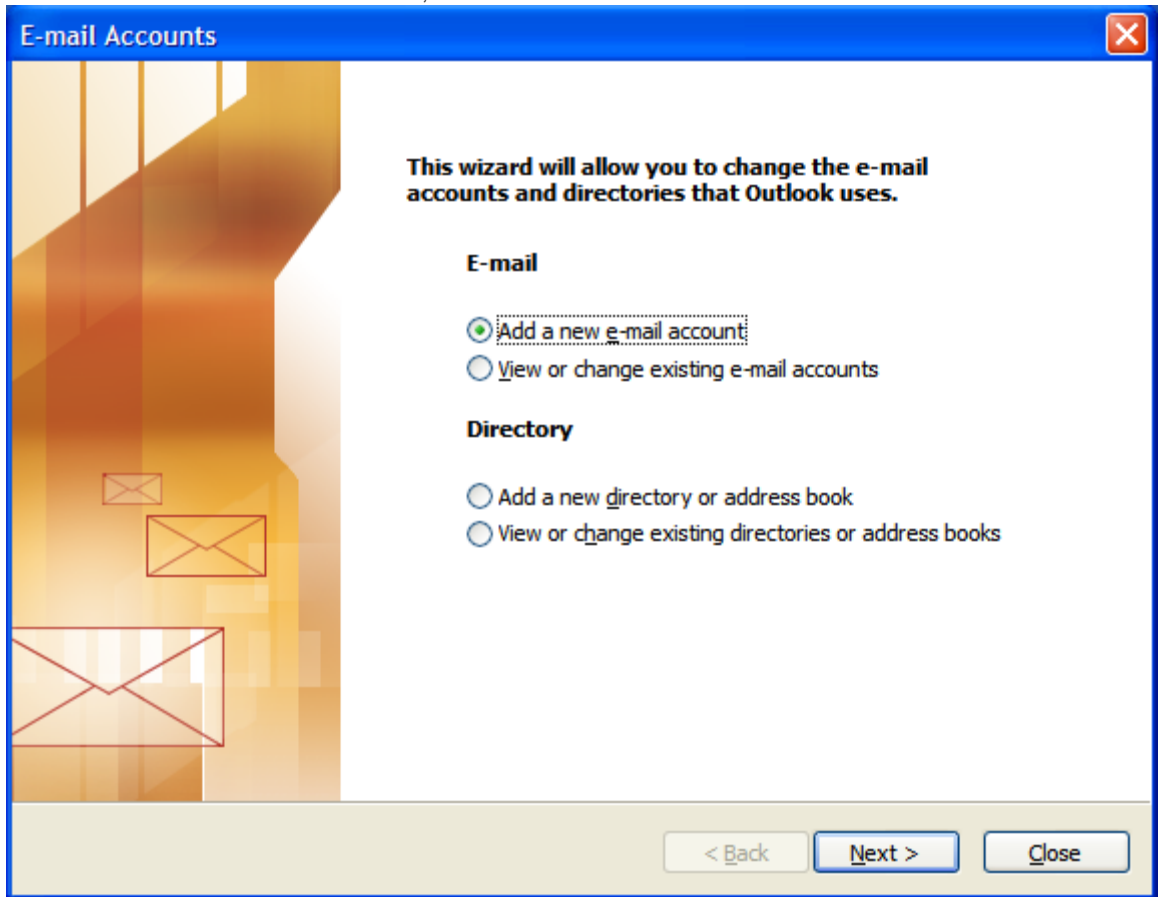
This tutorial shows you how to set up Microsoft Outlook to work with your e-mail account. This tutorial focuses on setting up Microsoft Outlook 2003, but these settings are similar in other versions of Microsoft Outlook. You can set up previous versions of Microsoft Outlook by using the settings in this tutorial.

To Set Up Your E-mail Account in Microsoft Outlook

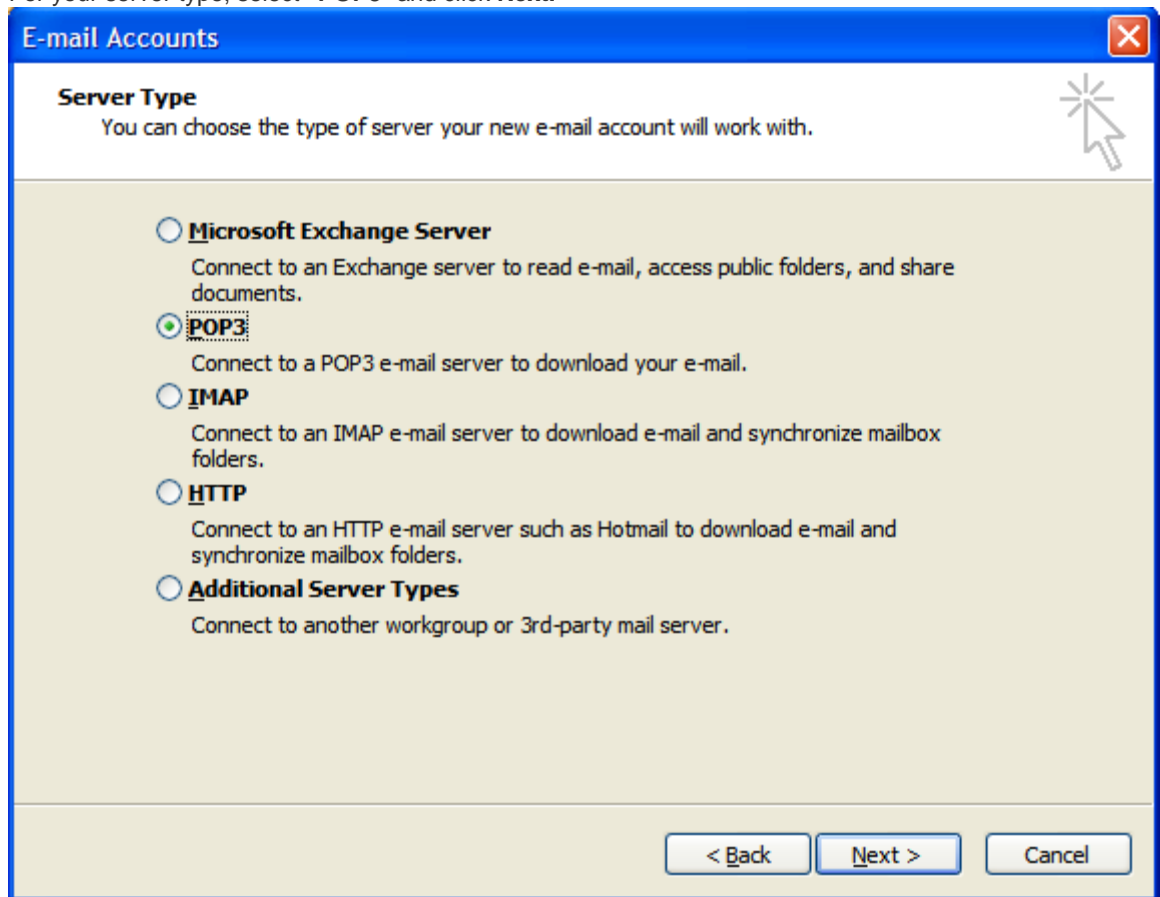
1. In Microsoft Outlook, select **Tools > E-mail Accounts**.



2. On the E-mail Accounts wizard window, select "Add a new e-mail account" and click **Next**.



3. For your server type, select "POP3" and click **Next**.



4. On the Internet E-mail Settings (POP3) window, enter your information as follows:

Your Name

Enter your first and last name.

E-mail Address

Enter your e-mail address.

User Name

Enter your e-mail address, again.

Password

Enter the password set up for your e-mail account.

Incoming mail server (POP3)

Enter **pop.secureserver.net** for your incoming mail server.

Outgoing mail server (SMTP)

Enter **smtpout.secureserver.net** for your outgoing mail server.

Click "**More Settings.**"

E-mail Accounts [Close]

Internet E-mail Settings (POP3)
Each of these settings are required to get your e-mail account working.

User Information

Your Name:

E-mail Address:

Server Information

Incoming mail server (POP3):

Outgoing mail server (SMTP):

Logon Information

User Name:

Password:

Remember password

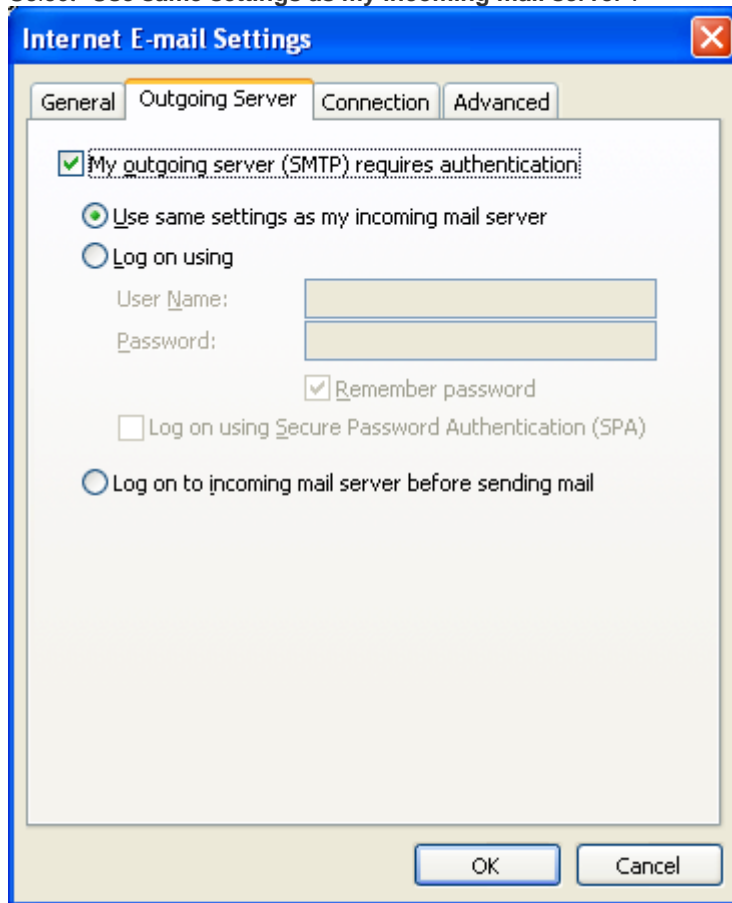
Log on using Secure Password Authentication (SPA)

Test Settings

After filling out the information on this screen, we recommend you test your account by clicking the button below. (Requires network connection)

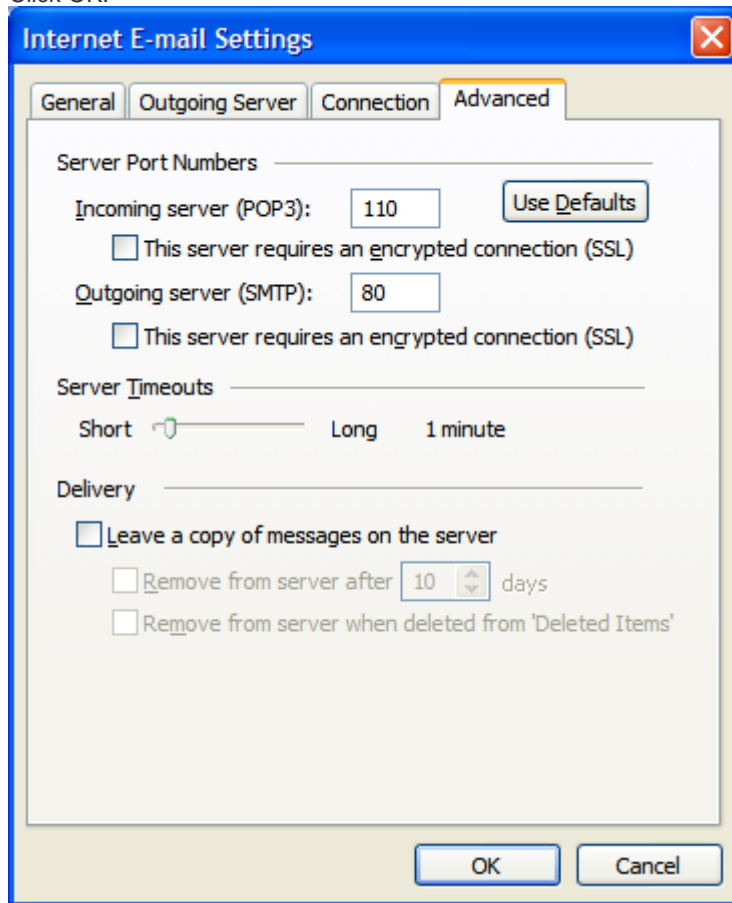
5. On the Internet E-mail Settings window, select the "Outgoing Server" tab.
6. Select "My outgoing server (SMTP) requires authentication."

7. Select "Use same settings as my incoming mail server".



8. Select the "Advanced" tab and change the "Outgoing server (SMTP)" port to 80 or 3535.

9. Click OK.



10. Click **Next**.

E-mail Accounts [Close]

Internet E-mail Settings (POP3)
Each of these settings are required to get your e-mail account working.

User Information

Your Name:

E-mail Address:

Server Information

Incoming mail server (POP3):

Outgoing mail server (SMTP):

Logon Information

User Name:

Password:

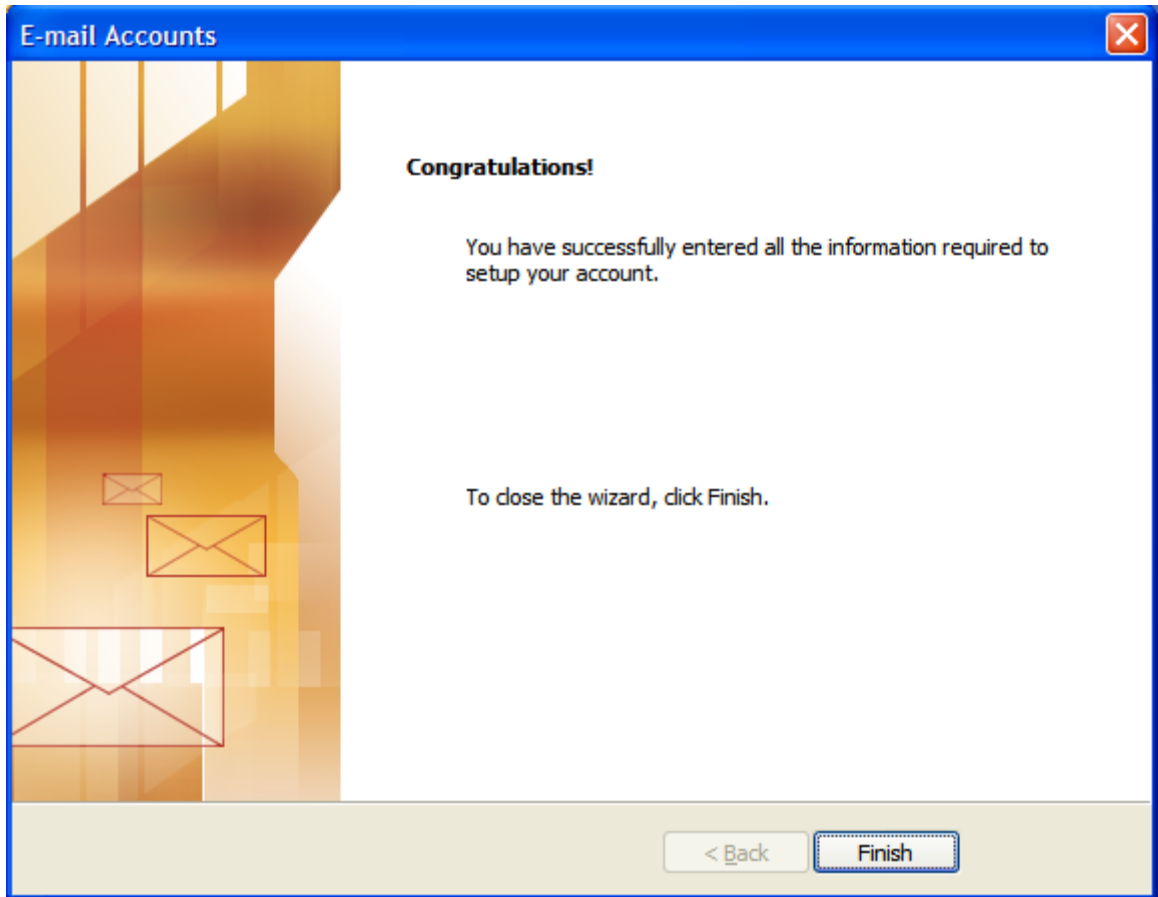
Remember password

Log on using Secure Password Authentication (SPA)

Test Settings

After filling out the information on this screen, we recommend you test your account by clicking the button below. (Requires network connection)

11. Click **Finish**.



To Set Up Outlook Express with Your Email Account

NOTE: The following procedure is for Microsoft Outlook Express 6.

In Microsoft Outlook Express, **select** Tools > Accounts.

1. On the **Internet Accounts** window, click the **Mail** tab, and then click **Add**.
2. On the **Internet Connect Wizard**, in the **Display name** field, type your full name and click **Next**.
3. In the **E-mail address** field, type your email address and click **Next**.
4. On the **E-mail Server Names** window, from the **My incoming mail server is a list**, select **POP3**.
5. In the **Incoming mail (POP3, IMAP or HTTP) server** field, enter **pop.secureserver.net**.
6. In the **Outgoing mail (SMTP) server** field, type **smtpout.secureserver.net**, and then click **Next**.
7. In the **Account name** and **Password** fields, type your email address and password, and then click **Next**.
8. Click **Finish**.
9. On the **Internet Accounts** wizard, select the mail account you just created and click **Properties**.
10. In the **Properties** window, click the **Servers** tab.
11. Select **My server requires authentication**.
12. Click the **Advanced** tab.
13. In the **Outgoing mail (SMTP)** field, change the port number to **80**, and then click **OK**.