

FOR LEASE

750 / 800 S. RAYMOND AVE., PASADENA, CA 91105



OFFICE AND RETAIL SPACE AVAILABLE FOR LEASE IN NEW
STATE-OF-THE-ART MEDICAL OFFICE BUILDING

For Leasing Information Contact:



The Wright Associated Companies

Tommy Gibson

Office: (626)610-1309 • Cell: (626)242-4655

Email: Tommy@WrightAssociated.com

AVAILABLE SPACE (DIVISIBLE):

- Medical Office: 30,414 SF
- Retail: 9,708 SF

LEASE PRICING:

Medical/Retail: \$3.25/SF
+ \$1.00/SF NNN (estimated NNN)

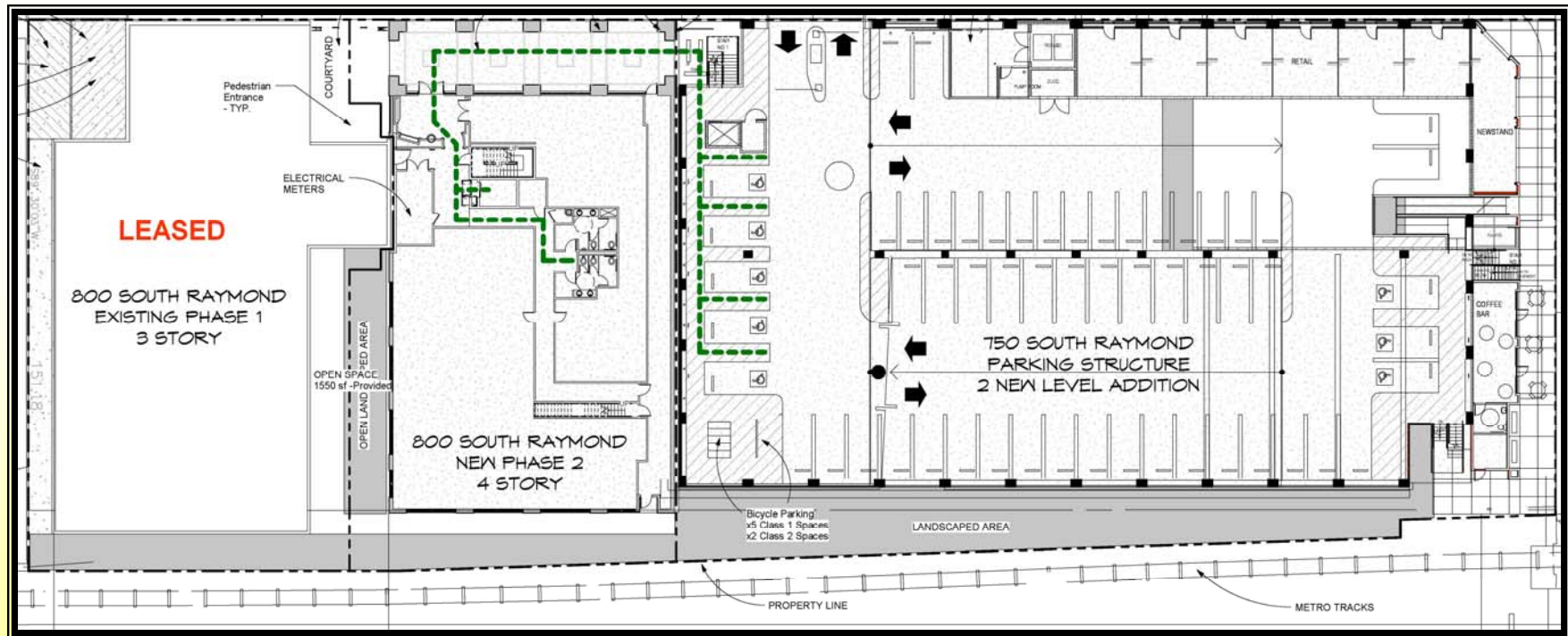
FEATURES:

- New facility with modern amenities
- Outpatient Surgery and MRI facilities in MOB 1
- Pharmacy in MOB 2
- ½ mile from Huntington Memorial Hospital
- High traffic location
- Located next to the Fillmore Station of the Metro Gold Line
- Easy access to the 210 Fwy

40,122 SF OF DIVISIBLE CLASS A MEDICAL/RETAIL SPACE FOR LEASE

The new Fillmore Raymond Medical Office Building Phase 2 (MOB 2) offers Retail units on the first floor, three floors of Medical Office space, and a 4½-story parking structure with Retail space on first floor. This new facility is located on the corner of Fillmore Ave and Raymond Ave. in Pasadena, adjacent to the Fillmore Station of the Metro Gold Line near Huntington Hospital. The retail and medical spaces available are divisible to meet your needs. All spaces benefit from the high traffic location, easily accessible parking structure, and luxurious feel of the property. Whether you are looking to relocate or open a new location, let your medical practice or retail business benefit from this facility's excellent location by leasing space today.

SITE PLAN FOR 750/800 S. RAYMOND AVE., PASADENA, CA 91105



FOR MORE INFORMATION VISIT
WWW.WRIGHTASSOCIATED.COM