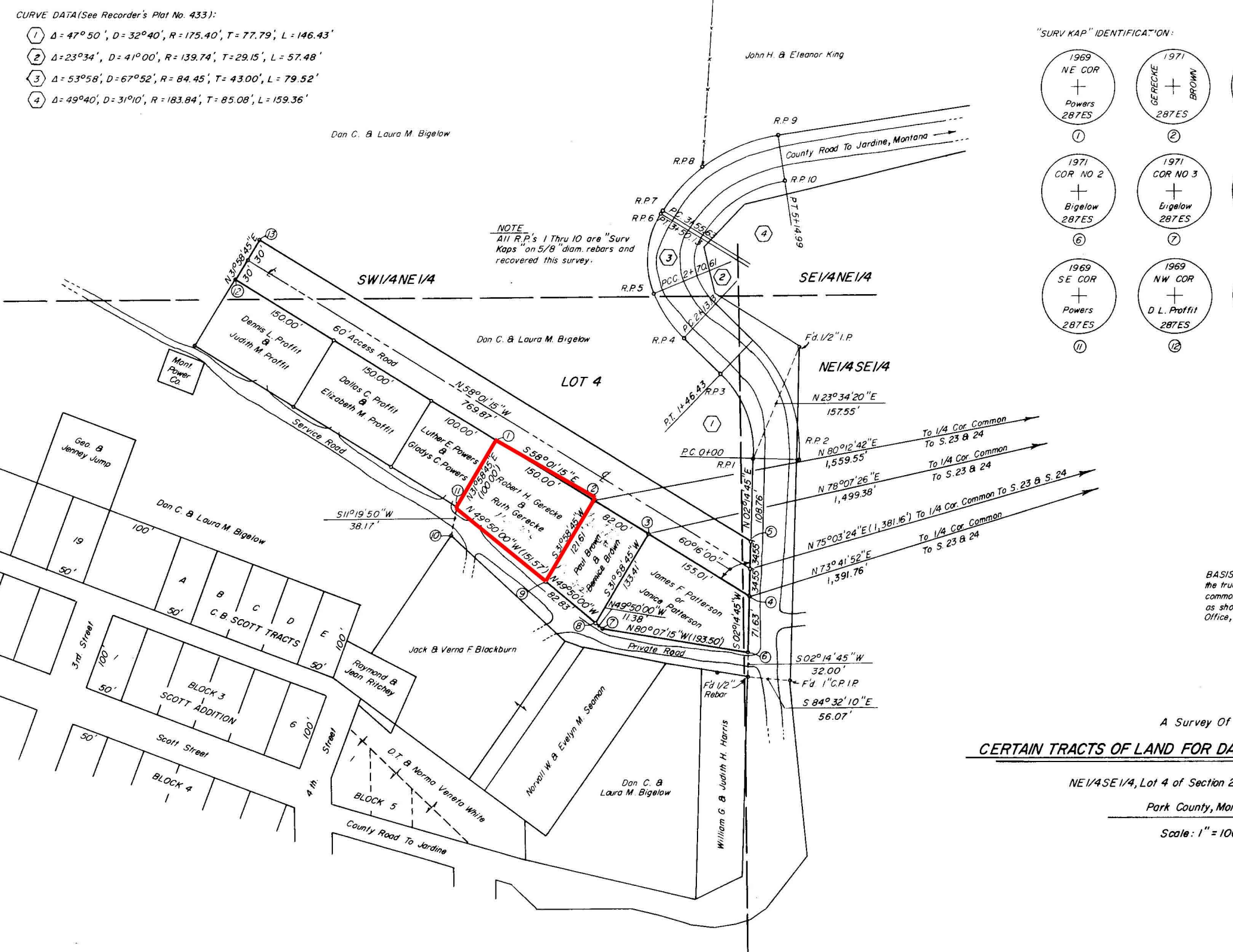
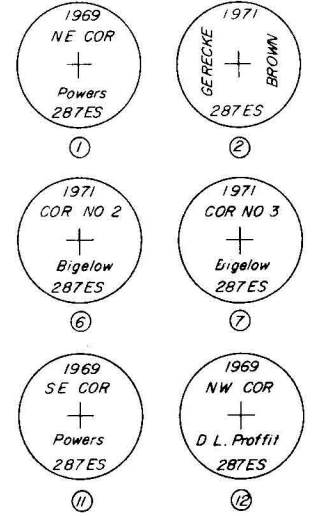


CURVE DATA (See Recorder's Plat No. 433):

- ① $\Delta = 47^{\circ}50'$, $D = 32^{\circ}40'$, $R = 175.40'$, $T = 77.79'$, $L = 146.43'$
- ② $\Delta = 23^{\circ}34'$, $D = 41^{\circ}00'$, $R = 139.74'$, $T = 29.15'$, $L = 57.48'$
- ③ $\Delta = 53^{\circ}58'$, $D = 67^{\circ}52'$, $R = 84.45'$, $T = 43.00'$, $L = 79.52'$
- ④ $\Delta = 49^{\circ}40'$, $D = 31^{\circ}10'$, $R = 183.84'$, $T = 85.08'$, $L = 159.36'$

"SURV KAP" IDENTIFICATION:



NOTE
All R.P.'s 1 Thru 10 are "Surv Kaps" on 5/8" diam. rebars and recovered this survey.

To 1/4 Cor. Common To S. 23 & 24
To 1/4 Cor. Common To S. 23 & 24
To 1/4 Cor. Common To S. 23 & S. 24
To 1/4 Cor. Common To S. 23 & 24

BASIS OF the true b common to as shown Office, Pa

A Survey Of
CERTAIN TRACTS OF LAND FOR DAN

NE 1/4 SE 1/4, Lot 4 of Section 23,

Park County, Monta

Scale: 1" = 100'