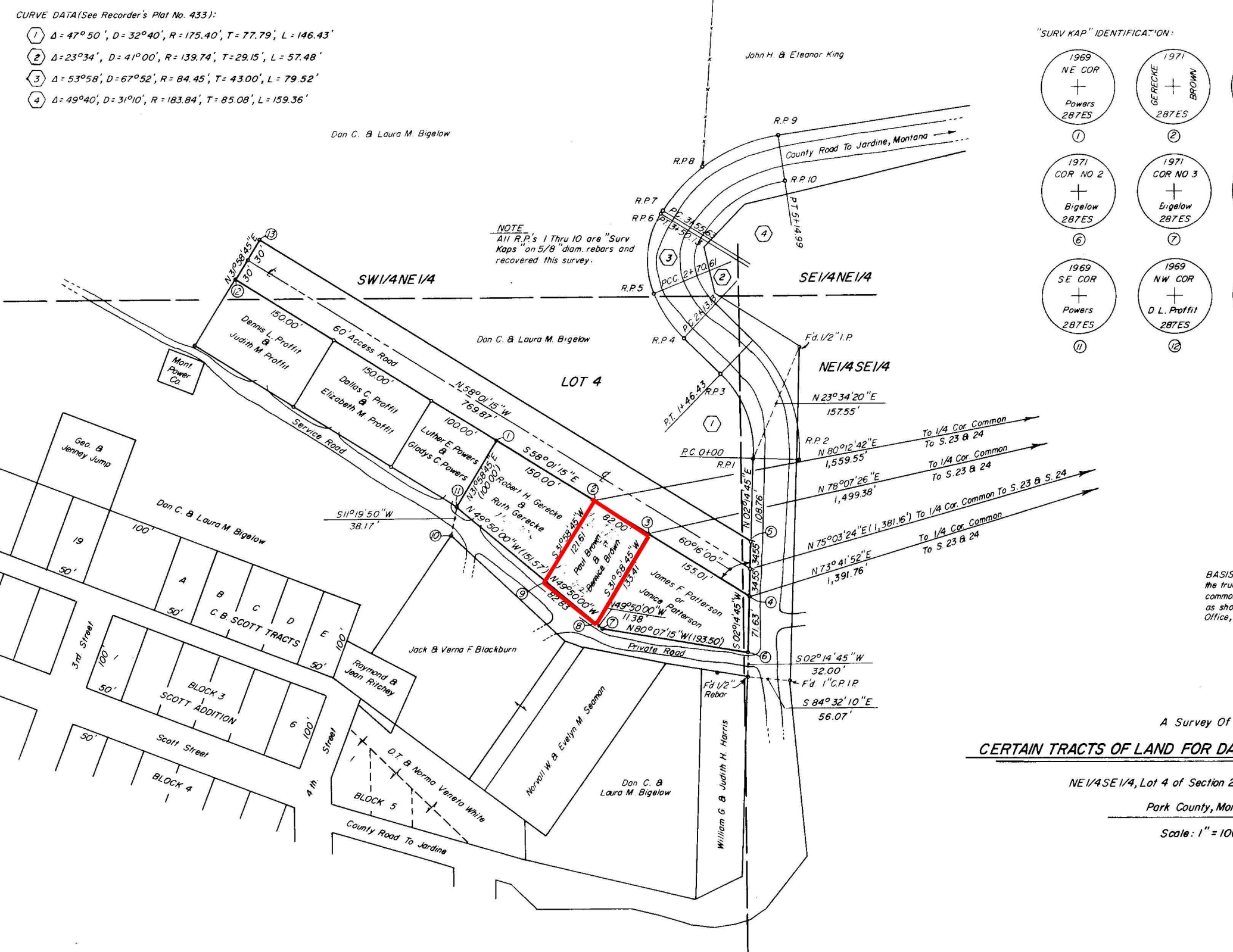
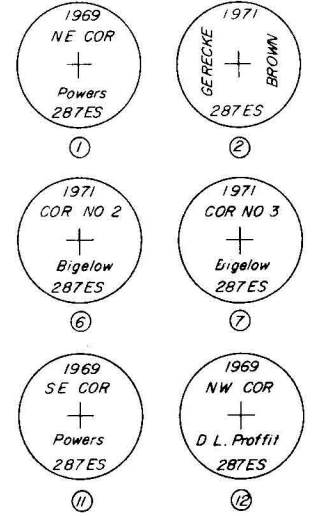


CURVE DATA (See Recorder's Plat No. 433):

- ①  $\Delta = 47^{\circ}50'$ ,  $D = 32^{\circ}40'$ ,  $R = 175.40'$ ,  $T = 77.79'$ ,  $L = 146.43'$
- ②  $\Delta = 23^{\circ}34'$ ,  $D = 41^{\circ}00'$ ,  $R = 139.74'$ ,  $T = 29.15'$ ,  $L = 57.48'$
- ③  $\Delta = 53^{\circ}58'$ ,  $D = 67^{\circ}52'$ ,  $R = 84.45'$ ,  $T = 43.00'$ ,  $L = 79.52'$
- ④  $\Delta = 49^{\circ}40'$ ,  $D = 31^{\circ}10'$ ,  $R = 183.84'$ ,  $T = 85.08'$ ,  $L = 159.36'$

"SURV KAP" IDENTIFICATION:



BASIS OF the true b common to as shown Office, Pa

A Survey Of  
**CERTAIN TRACTS OF LAND FOR DAN**  
NE 1/4 SE 1/4, Lot 4 of Section 23,  
Park County, Mont  
Scale: 1" = 100'