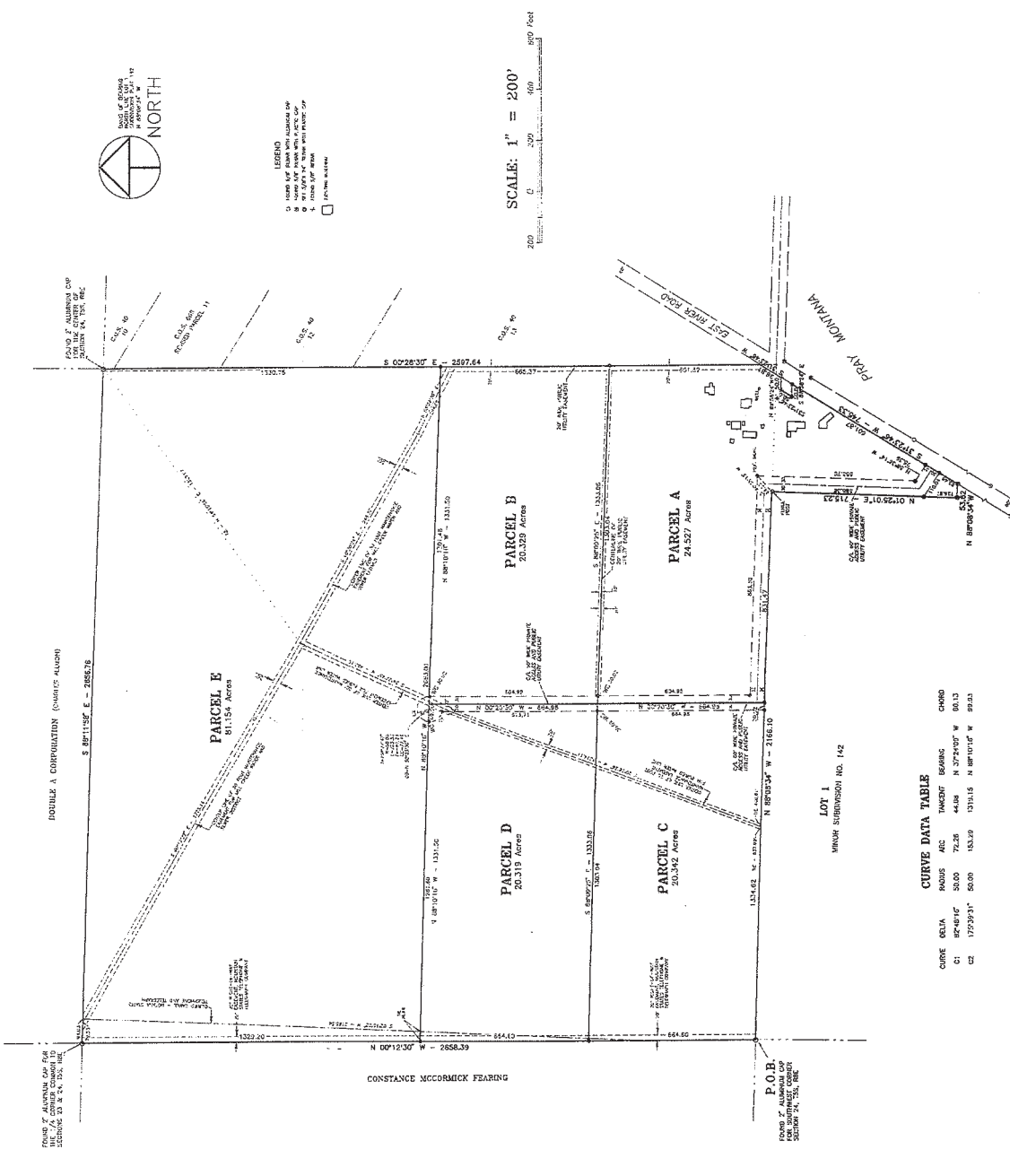


# MINOR SUBDIVISION PLAT No. 425

A TRACT OF LAND LOCATED IN THE SOUTHWEST 1/4 OF SECTION 24 AND THE NORTHEAST 1/4 OF THE NORTHWEST 1/4 OF SECTION 25, T.5 S., R.8 E., P.M.M., PARK COUNTY, MONTANA



**CERTIFICATE OF CONSENT**

THE L.L.C. HAS BEEN HEREBY CERTIFIED THAT THE ABOVE DESCRIBED AND PLATED SUBDIVISION IS SHOWN BY THIS MINOR SUBDIVISION PLAT FILING TO BE PROPERLY SUBDIVIDED AND THAT ALL NECESSARY RECORDS HAVE BEEN FILED IN THE OFFICE OF THE COUNTY CLERK OF PARK COUNTY, MONTANA, AND THAT THE FOLLOWING DESCRIBED TRACT OF LAND TO WIT:

**DESCRIPTION**

A TRACT OF LAND LOCATED IN THE SOUTHWEST 1/4 OF SECTION 24 AND THE NORTHEAST 1/4 OF SECTION 25, T.5 S., R.8 E., P.M.M., PARK COUNTY, MONTANA, AND MORE FULLY DESCRIBED AS FOLLOWS:

THE TRACT OF LAND DESCRIBED IN THE ABOVE IS TO BE KNOWN AND DESIGNATED AS MOST SUBDIVISION NO. 425, PARK COUNTY, MONTANA.

WE, THE UNDERSIGNED, THE CLERK AND RECORDER OF PARK COUNTY, MONTANA, DO HEREBY CERTIFY THAT THE FOREGOING INSTRUMENT WAS FILED IN MY OFFICE IN THE OFFICE OF THE COUNTY CLERK OF PARK COUNTY, MONTANA, AND THAT ALL NECESSARY RECORDS HAVE BEEN FILED IN THE OFFICE OF THE COUNTY CLERK OF PARK COUNTY, MONTANA.

IN WITNESS WHEREOF, I HAVE HEREBY SET MY HAND AND SEAL OF OFFICE IN THE CITY OF BUTTE, MONTANA, THIS 27th DAY OF JULY, 2003.

BY: *[Signature]*  
CLERK AND RECORDER OF PARK COUNTY

**CERTIFICATE OF SURVEYOR**

I, THE UNDERSIGNED SURVEYOR, DO HEREBY CERTIFY THAT THE RECORDS OF THE ABOVE DESCRIBED AND PLATED SUBDIVISION PLAT, THAT ARE REFERRED TO IN THE FOREGOING INSTRUMENT, HAVE BEEN EXAMINED AND FOUND TO BE CORRECT AND ACCURATE AND THAT THE SAME COMPLY WITH THE REQUIREMENTS OF THE SUBDIVISION ACT AND THE RULES AND REGULATIONS OF THE BOARD OF COUNTY COMMISSIONERS OF PARK COUNTY, MONTANA.

MADE THIS 27th DAY OF JULY, 2003, AT BUTTE, MONTANA.

*[Signature]*  
SURVEYOR

**CERTIFICATE OF COUNTY COMMISSIONERS**

I, JAMES SULLIVAN, CHAIRMAN OF THE BOARD OF COUNTY COMMISSIONERS, PARK COUNTY, MONTANA, DO HEREBY CERTIFY THAT THE ABOVE DESCRIBED AND PLATED SUBDIVISION PLAT, THAT IS REFERRED TO IN THE FOREGOING INSTRUMENT, HAS BEEN EXAMINED AND FOUND TO BE CORRECT AND ACCURATE AND THAT THE SAME COMPLY WITH THE REQUIREMENTS OF THE SUBDIVISION ACT AND THE RULES AND REGULATIONS OF THE BOARD OF COUNTY COMMISSIONERS OF PARK COUNTY, MONTANA.

MADE THIS 27th DAY OF JULY, 2003, AT BUTTE, MONTANA.

*[Signature]*  
CHAIRMAN

**CERTIFICATE OF COUNTY TREASURER**

I, BERT HOLLAND, COUNTY TREASURER OF PARK COUNTY, MONTANA, HEREBY CERTIFY THAT THE ABOVE DESCRIBED AND PLATED SUBDIVISION PLAT, THAT IS REFERRED TO IN THE FOREGOING INSTRUMENT, HAS BEEN EXAMINED AND FOUND TO BE CORRECT AND ACCURATE AND THAT ALL NECESSARY RECORDS HAVE BEEN FILED IN THE OFFICE OF THE COUNTY CLERK OF PARK COUNTY, MONTANA.

MADE THIS 27th DAY OF JULY, 2003, AT BUTTE, MONTANA.

*[Signature]*  
COUNTY TREASURER OF PARK COUNTY

**CERTIFICATE OF COUNTY CLERK**

I, CHARLES J. YAMAGUCHI, COUNTY CLERK OF PARK COUNTY, MONTANA, HEREBY CERTIFY THAT THE ABOVE DESCRIBED AND PLATED SUBDIVISION PLAT, THAT IS REFERRED TO IN THE FOREGOING INSTRUMENT, HAS BEEN EXAMINED AND FOUND TO BE CORRECT AND ACCURATE AND THAT ALL NECESSARY RECORDS HAVE BEEN FILED IN THE OFFICE OF THE COUNTY CLERK OF PARK COUNTY, MONTANA.

MADE THIS 27th DAY OF JULY, 2003, AT BUTTE, MONTANA.

*[Signature]*  
COUNTY CLERK OF PARK COUNTY

PREPARED BY: MAPPING  
PALMER SURVEYING & MAPPING  
1000 TAYLORWOOD ROAD  
BOZEMAN, MONTANA 59715