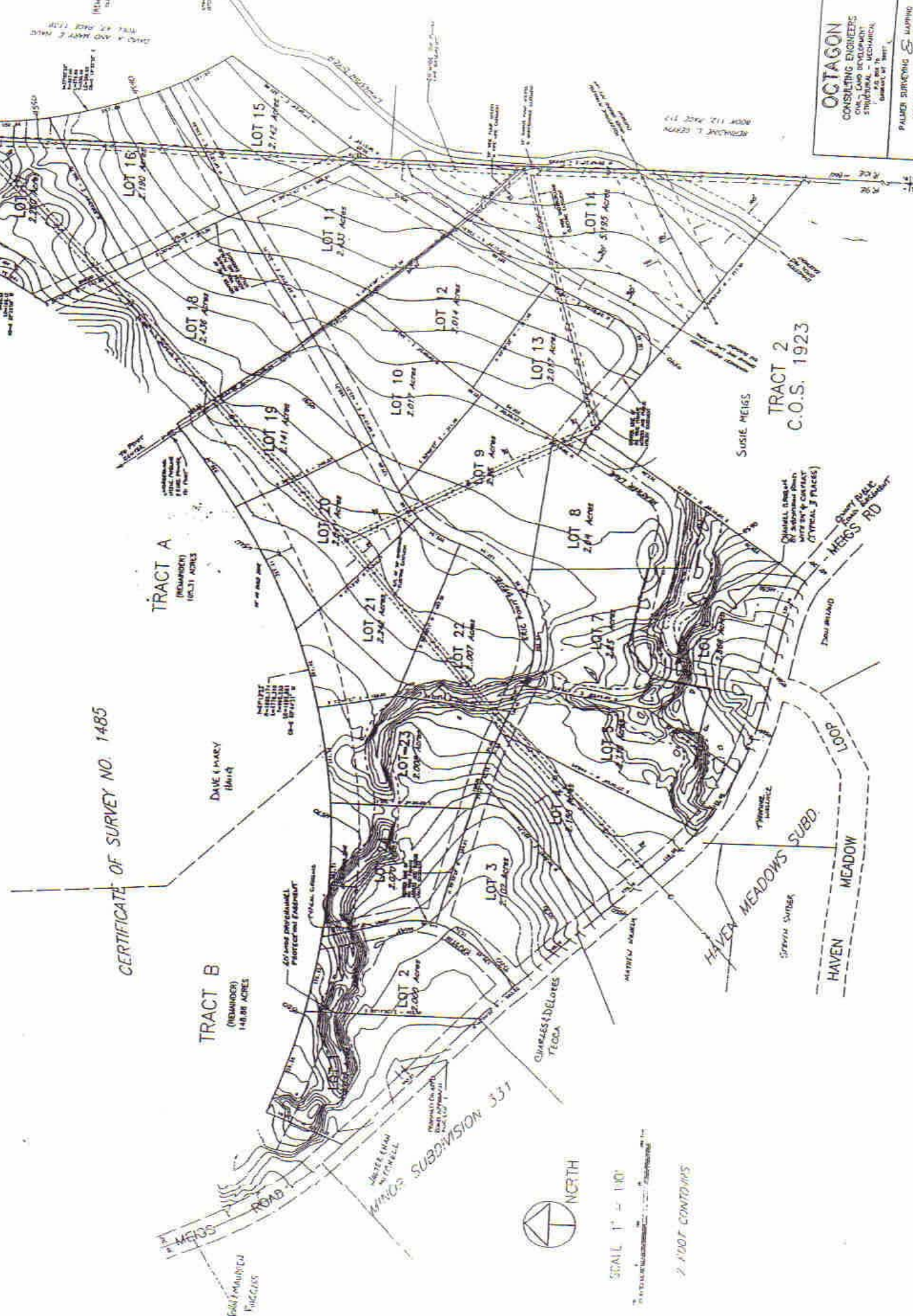


PRELIMINARY PLAT OF

PIVOT POINT MAJOR SUBDIVISION PLAT NO.

A TRACT OF LAND BEING A PART OF TRACT A AND B OF CERTIFICATE OF SURVEY NO. 1485 LOCATED IN THE SE 1/4 OF SECTION 1, T. 2 S., R. 9 E., P.M.M., PARK COUNTY, MONTANA



OCTAGON
 CONSULTING ENGINEERS
 CIVIL, LAND DEVELOPMENT,
 STRUCTURAL - MECHANICAL
 415 25th St. N.
 Grand Forks, N.D.
 PALMER SURVEYING & MAPPING
 1800 EXETER AVENUE
 GRAND FORKS, N.D.

TRACT 2
 C.O.S. 1923

SUSIE MEIGS

CHAMBERLAIN
 BY SUPERVISOR JOHN
 WIRE BY CHARTER
 (TYPICAL 3 PLACES)

CHERRY BLAKE
 JOHN WIRE
 MEIGS RD

HAVEN MEADOWS SUBD.
 STEVEN SURBER
 HAVEN MEADOW



SCALE 1" = 100'

2-FOOT CONTOURS

MINOR SUBDIVISION 331

TRACT B
 (REMAINDER)
 148.88 ACRES

TRACT A
 (REMAINDER)
 1063.1 ACRES

CERTIFICATE OF SURVEY NO. 1485

DAVE (MARY) HAVEN

GOVERNMENT PROTECTION FOREST

CHARLES BLORES
 TEGGA

2-FOOT CONTOURS

**PRELIMINARY PLAT OF
PIVOT POINT MAJOR SUBDIVISION PLAT NO.**

A TRACT OF LAND BEING A PART OF TRACT A AND B OF CERTIFICATE OF SURVEY NO. 1485 LOCATED IN THE
SE 1/4 OF SECTION 1, T. 2 S., R. 9 E., P.M.M., PARK COUNTY, MONTANA

