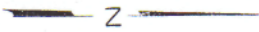
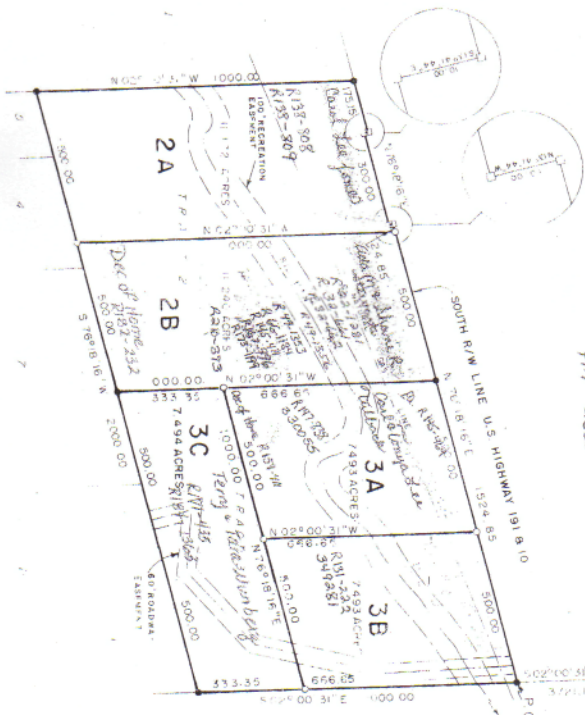


THIS MAP IS PROVIDED FOR LOCATION PURPOSES TO OUR CUSTOMERS, AS A COURTESY - NO LIABILITY IS HEREBY ASSUMED BY GUARDIAN TITLE AND/OR STEWART TITLE GUARANTY COMPANY, WHICH MAY RESULT FROM RELIANCE ON THIS MAP



SCALE 1" = 330'

- 1/4" 1/8" RE BAR WITH CAP
 - 1/4" 5/8" RE BAR WITH ALUM CAP
 - FC CONC MON
- FIG BASED ON C OF S 132



*Division Approval for 3A
FM #2300*

2646 75
N 58° 24' 00" E



502° 00' 00" S
371.18